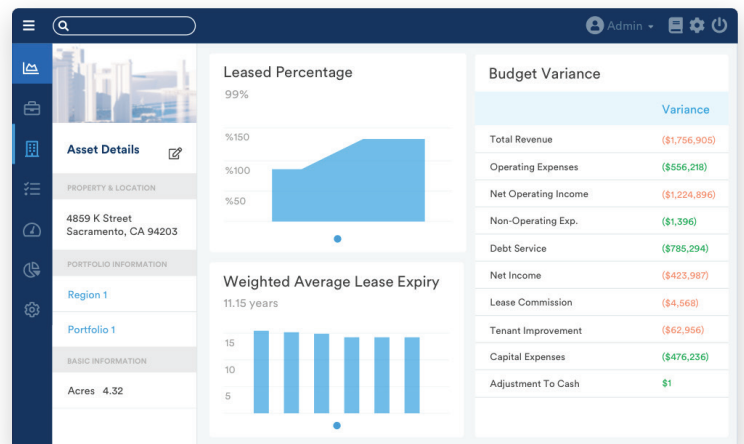


# Why Your Property Software is Broken

You're likely already paying for a property operations tool, so why not use one that actually gives owners something useful? WorkSpace is the only property management software that includes solutions for asset owners AND property teams. Our Asset management dashboard offers deep visibility into individual assets and your portfolio, while arming your property teams with the only Property Management software on the market designed around efficiency and impact. Did someone say win-win?

## Self-Sufficiency Through Self-Service with Asset Management

With the click of a button, our asset management solution gives your ownership team first-time direct access to the metrics that are critical in shaping your investment and management strategies. No waiting, no wishing.



- ✓ Automatically ingest detailed data scrubbed for accuracy.
- ✓ Visualize and utilize data from disparate systems on one platform.
- ✓ On-demand access to your key metrics, visualized.
- ✓ Proactively mitigate overruns and unintended exposure.

“

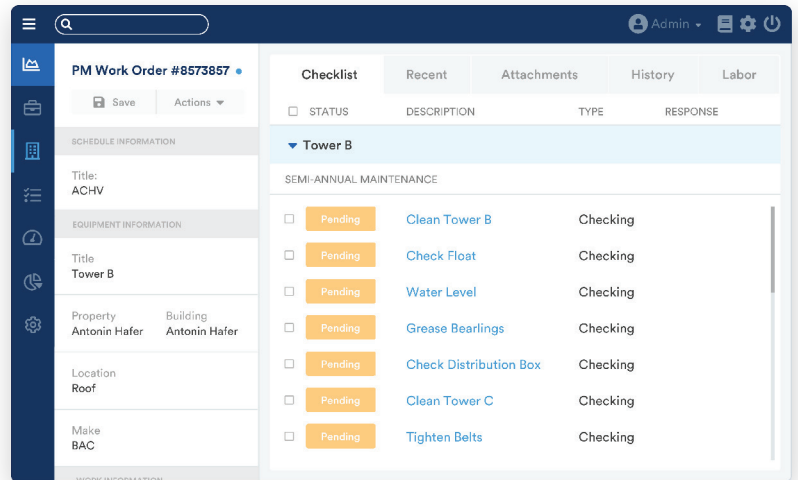
WorkSpace helps us play offense by enabling us to take a proactive, instead of reactive, approach to asset management. In a time of unprecedented (day-to-day) volatility having access to our data in real-time through their platform helps us make confident decisions, be more agile, and see around the next corner.”

**Director of Asset Management**

## Give your team a Property Management Platform they'll love (and use!)

Our comprehensive property management solution includes features usually found in separate point solutions including service requests, tenant broadcasts, automated COI notifications, and paperless payable workflows. Translation: scalability and efficiency make the dream work.

- ✔ Increase portfolio revenue: Extend the life of your asset
- ✔ Reduce Operating Costs: Streamline workflows to do more with less
- ✔ Enhance Tenant Satisfaction: Provide a seamless experience for web and mobile
- ✔ Minimize Risk: Remove the possibility for human error



**\$30 B+**

Assets powered by  
WorkSpace

**400 M+**

SF live on  
WorkSpace

**2,800+**

Properties run on  
WorkSpace

**40,000+**

users work in  
WorkSpace

### Get in touch

WorkSpace was built for CRE professionals - find out what it can do for you and your team. [Request a demo](#) or reach out to [learnmore@goworkspace.com](mailto:learnmore@goworkspace.com)

Trusted By

